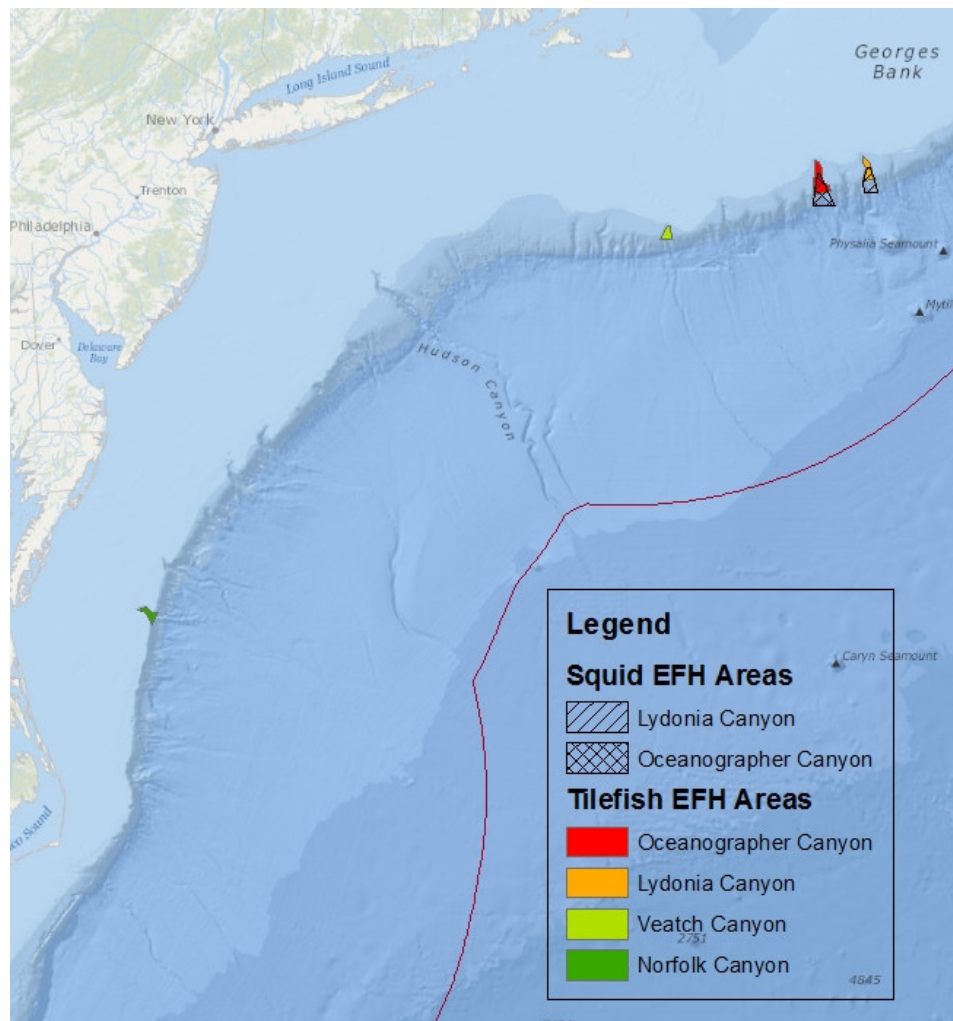


EFH Areas Protected from Fishing in the Mid-Atlantic Region

Section 303(a)(7) of the Magnuson-Stevens Fishery Conservation and Management Act requires NOAA Fisheries to take steps to minimize to the extent practicable adverse effects of fishing on essential fish habitat (EFH).

NOAA Fisheries works with the Mid-Atlantic Fishery Management Council to protect EFH in support of healthy ecosystems and sustainable fisheries in the Atlantic Ocean.



Essential fish habitat (EFH) means those waters and substrate necessary to fish for spawning, breeding, feeding, or growth to maturity

For more information on how NOAA Fisheries protects essential fish habitat, visit

<https://www.fisheries.noaa.gov/national/habitat-conservation/essential-fish-habitat>

Mid-Atlantic Site Name	GIS Area (Acres)	FMP	50 CFR	Regs published
1 Lydonia Canyon	41,806	MSB FMP Am 9	648.23 (a)(4)(ii)	7/1/2008
2 Oceanographer Canyon	63,625	MSB FMP Am 9	648.23 (a)(4)(i)	7/1/2008
3 Lydonia Canyon Gear Restricted Area	24,259	Tilefish FMP Am 1	648.296	8/24/2009
4 Norfolk Canyon Gear Restricted Area	21,115	Tilefish FMP Am 1	648.296	8/24/2009
5 Oceanographer Canyon Gear Restricted Area	50,826	Tilefish FMP Am 1	648.296	8/24/2009
6 Veatch Canyon Gear Restricted Area	16,864	Tilefish FMP Am 1	648.296	8/24/2009

(MSB = Mackerel, Squid, Butterfish)

Measures to Protect EFH from Fishing Impacts in the Mid-Atlantic Region

Mid-Atlantic Fishery Management Council EFH Protection Measures

Oceanographer Canyon

Lydonia Canyon

Established in 2008 MAFMC Amendment 9 to the Atlantic Mackerel, Squid, and Butterfish FMP

§ 648.23 Gear restrictions. (a)(4) *Mackerel, squid, and butterfish bottom trawling restricted areas.*

(i) ***Oceanographer Canyon.*** No permitted mackerel, squid, or butterfish vessel may fish with bottom trawl gear in the Oceanographer Canyon or be in the Oceanographer Canyon unless transiting. Vessels may transit this area provided the bottom trawl gear is stowed in accordance with the provisions of paragraph (b) of this section.

(ii) ***Lydonia Canyon.*** No permitted mackerel, squid, or butterfish vessel may fish with bottom trawl gear in the Lydonia Canyon or be in the Lydonia Canyon unless transiting. Vessels may transit this area provided the bottom trawl gear is stowed in accordance with the provisions of paragraph (b) of this section.

Lydonia Canyon Gear Restricted Area

Norfolk Canyon Gear Restricted Area

Oceanographer Canyon Gear Restricted Area

Veatch Canyon Gear Restricted Area

Established in 2009 MAFMC Amendment 1 to the Tilefish Fishery Management Plan

§ 648.296 Gear restricted areas. No vessel of the United States may fish with bottom-tending mobile gear within the areas bounded by the following coordinates: [names and coordinates for **Oceanographer, Lydonia, Veatch, and Norfolk Canyon Gear Restricted Areas** listed].

[From the Preamble to the 2009 regulations published in the Federal Register:

EFH Measures C. Gear Restricted Areas (GRAs): The Magnuson-Stevens Act requires that Councils evaluate potential adverse effects of fishing activities on EFH and include in FMPs management measures necessary to minimize adverse effects to the extent practicable. Specifically for tilefish, clay outcroppings (pueblo habitats) have been determined to be highly vulnerable to permanent disturbance by bottom-tending mobile gear such as the bottom otter trawl, as described in Amendment 1. Therefore, several GRAs are approved to minimize impacts on juvenile and adult tilefish EFH from bottom trawling activity. These closed areas do not follow the depth contours exactly, but are designed as polygonal areas that approximate the areas and depths described, while allowing for straight boundaries for enforcement purposes. In addition, because these areas are closed polygons, any areas within those GRAs that are deeper than the maximum depth that defines tilefish EFH are also closed to bottom trawling activity, even though they are not defined as EFH. Amendment 1 prohibits bottom trawling, within and adjacent to the four Canyons identified as HAPC, at depths associated with the revised EFH designation.]